

Removal of Grille on 2008 Mini Cooper S

By Jeff Causey, aka jcauseyfd on www.tarheelminis.org and www.northamericanmotoring.com, owner of Mr. Mini Wuf, 2008 MCS CR/W

The following shows what I had to do to remove the front grille on my 2008 Mini Cooper S in order to install some grille badge holders. I would assume this would apply to all R56 S models. Not sure about the non-S models since their grille is different, but perhaps it is held on in the same manner.

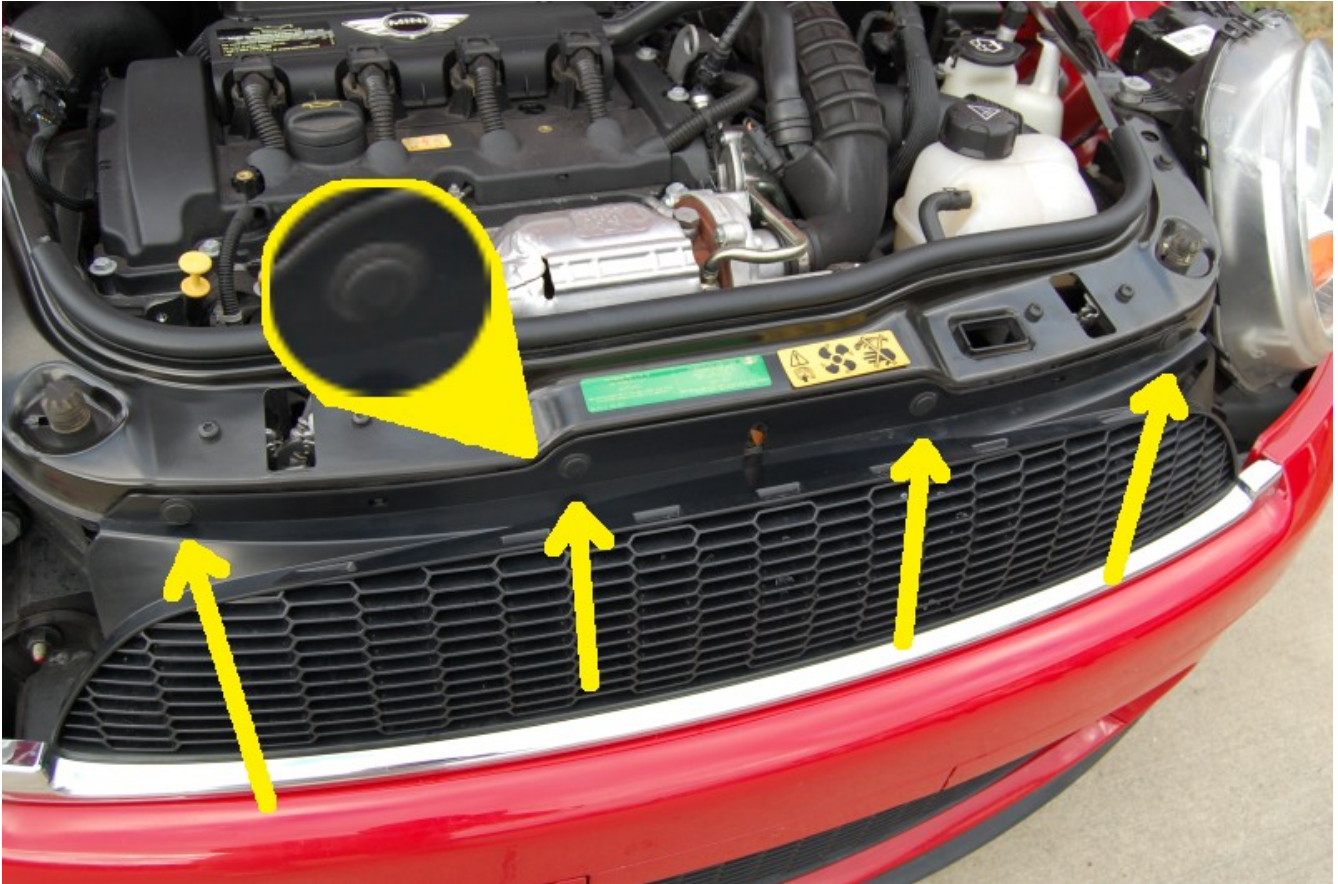


Illustration 1: Overview showing the four "pins" that hold the top of the grille



Illustration 2: I use a flathead screwdriver to pop these out. Maybe there is something better? They just slide out.



Illustration 3: A shot showing the "pin" slid out. These work like a screw anchor for sheetrock. Once you pull the pin out, the whole thing comes out.



Illustration 4: A shot of the "pin" assembly removed from the top of the grille. Remove all four.

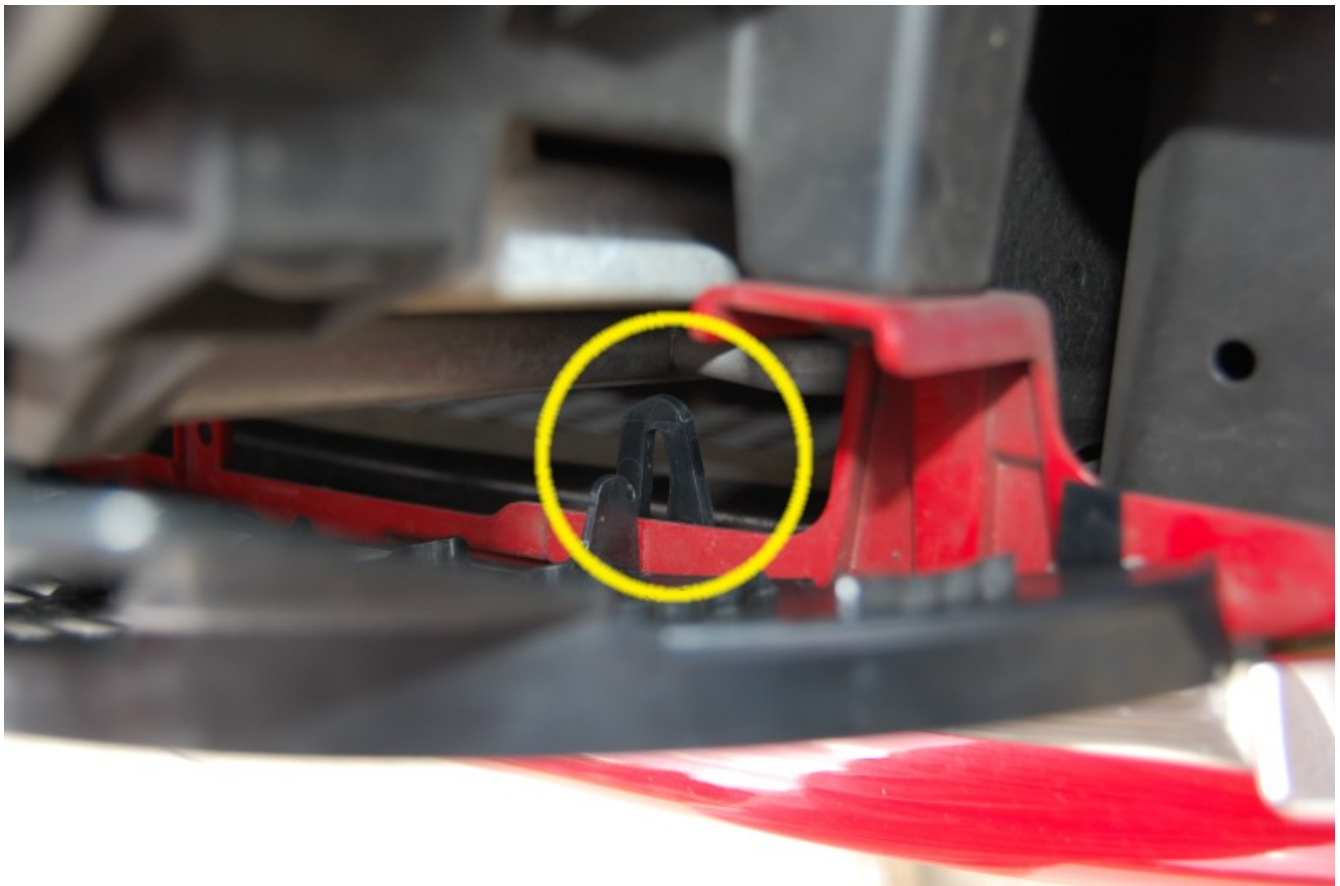
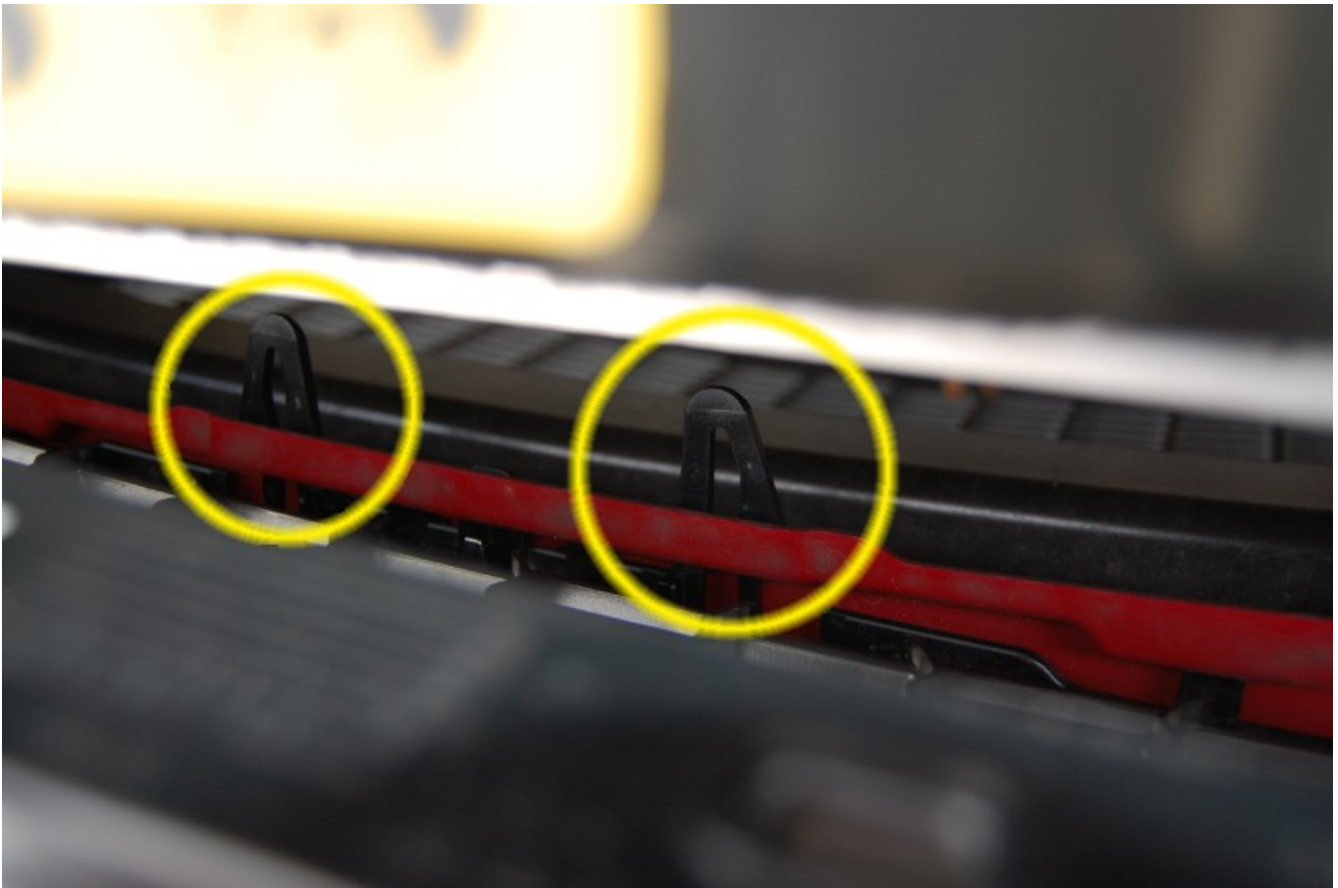


Illustration 5: This is looking down behind the grille from the top. I have gently pulled back the top of the grille. It will pull back a good 3-4 inches. The tab I've circled is near the end of the grille (this is at the end on the driver's side).



Illustration 6: To get the tab to pull out, you have to squeeze it together like tweezers. You can either use a long screwdriver to apply pressure to one side or if you can reach your hand in there you might be able to do it. Some long pliers might work as well. Once squeezed together, you have to use your other hand to simultaneously pull out the grille. You might note in the picture the arrow is pointing to the base of the tab where you can see how there is a small "ledge" that has to clear the opening in the bumper in order to pull it out. In this particular shot, the tab is about halfway out (though it is free at this point).



*Illustration 7: The circled tabs are the two in the middle section of the grille (there are four total that roughly correspond with the pins at the top). These are a little more challenging to get to, but the same concept applies. I haven't really figured out whether it is easier to work from one end to the other or do the two outside then the two inside or maybe it doesn't matter. One key is that **the side of the tab that needs to be squeezed is the side that is closest to the outside of the car**. So looking in from the top, bending over the grille from a standing position in front of the Mini, the two tabs on the driver side need the right side squeezed and the passenger side tabs need the left hand side squeezed.*

That's all there is to it. Once you have removed the four pins and the four tabs along the bottom, the grille will be free (in fact, as you pull the last tab free, be sure you have a hold of the grille lest it fall to the ground). Re-installation is just a matter of lining up the tabs and pushing them back into the slots on the bumper, then pushing the pins back in along the top.



Illustration 8: Tada - two new grille badge holders installed.

This work is licensed under the Creative Commons Attribution-Noncommercial 3.0 United States License. To view a copy of this license, visit <http://creativecommons.org/licenses/by-nc/3.0/us/> or send a letter to Creative Commons, 171 Second Street, Suite 300, San Francisco, California, 94105, USA.